



New Meadow, Ivybridge, PL21 9PT

£395,000

3 2 2



An elevated 3 bedroom detached bungalow benefitting from southerly facing views at front and level access from the driveway at the side. The bungalow has an entrance hall, living room leading to a dining area, kitchen, family bathroom, the 3 bedrooms and en suite shower room. Externally there are landscaped gardens geared for ease of maintenance and a single garage. The bungalow is Upvc double glazed and gas centrally heated. No chain. EPC D 68.



MILLINGTON TUNNICLIFF

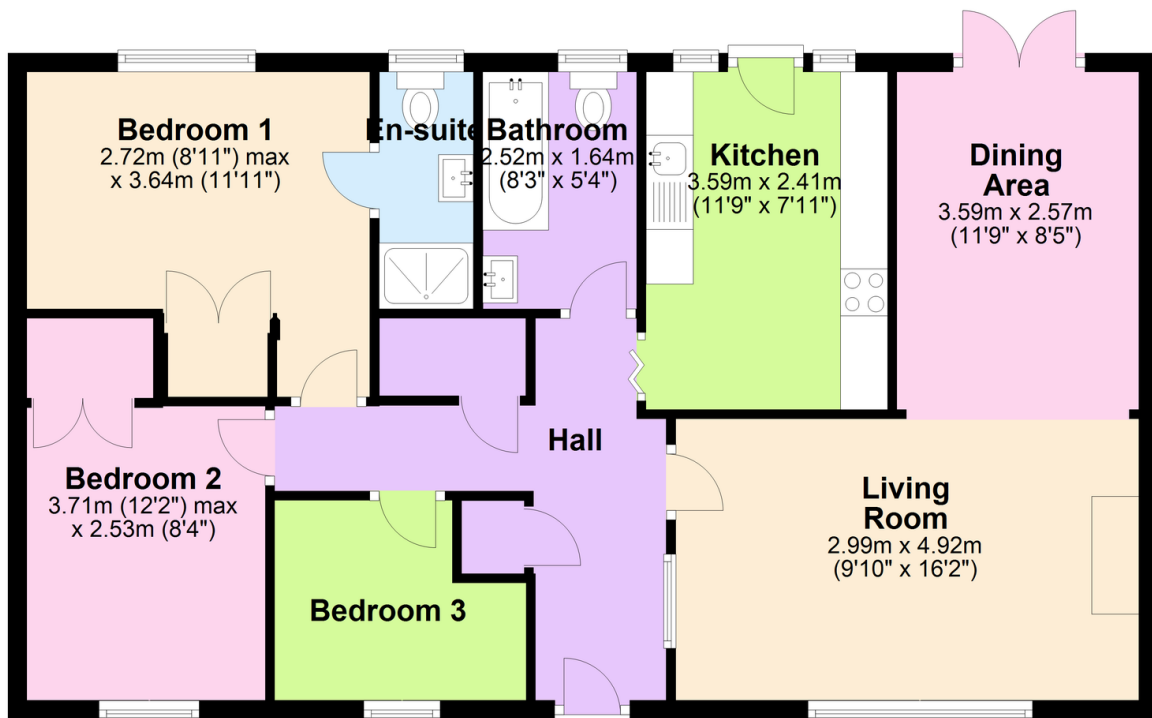
www.millingtontunncliff.co.uk

Key Features

- 3 Bedroom Detached Bungalow
- Elevated Southerly Views At Front
- En Suite Shower Room
- Gas Central Heating
- Landscaped Rear Garden
- 2 Reception Rooms
- No Onward Chain
- Upvc Double Glazing
- Garage
- EPC D 68

Ground Floor

Approx. 80.5 sq. metres (866.5 sq. feet)



Total area: approx. 80.5 sq. metres (866.5 sq. feet)

01752 896020 | info@millingtontunncliff.co.uk | 19 Fore Street, Ivybridge, Devon, PL21 9AB